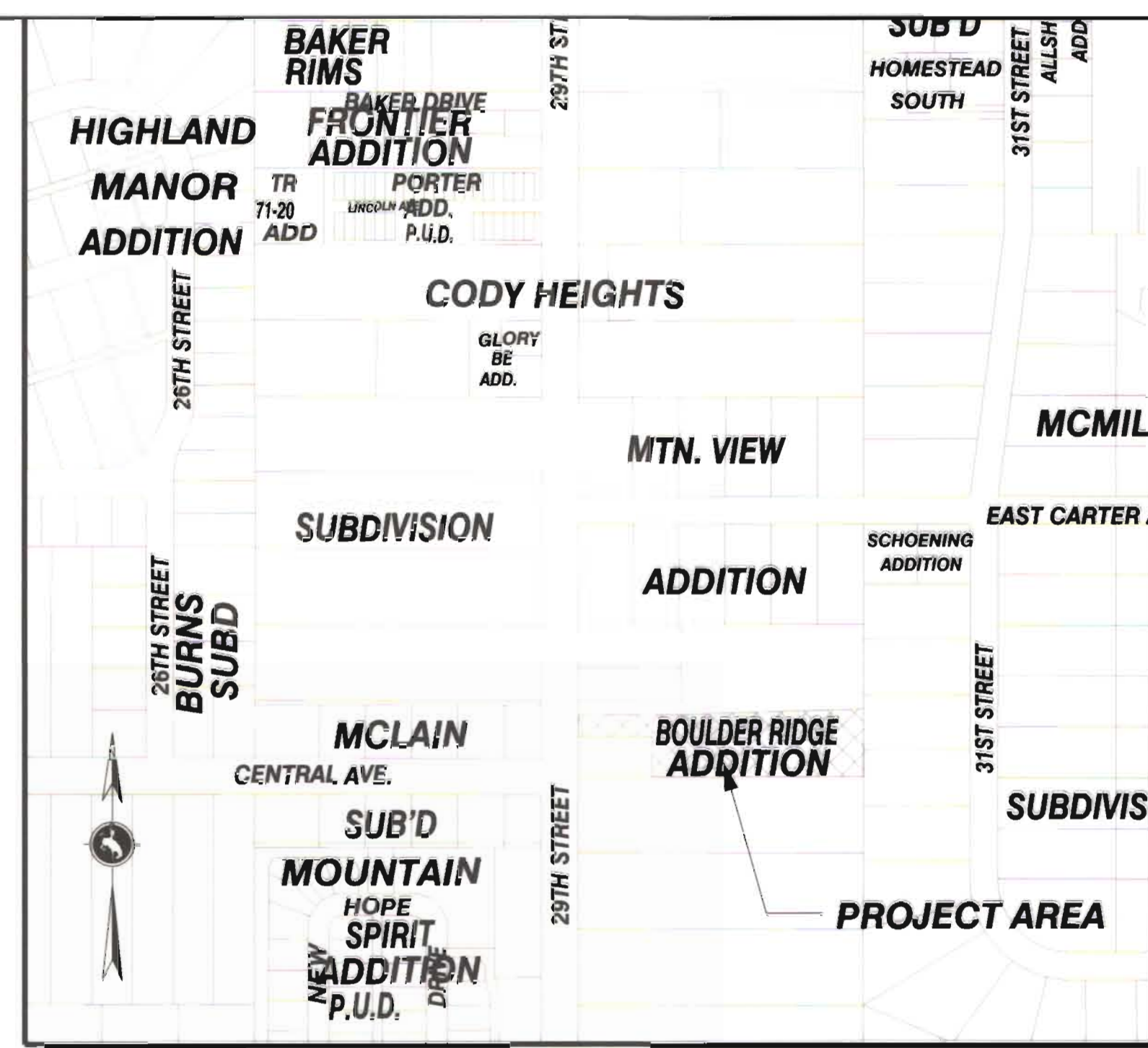
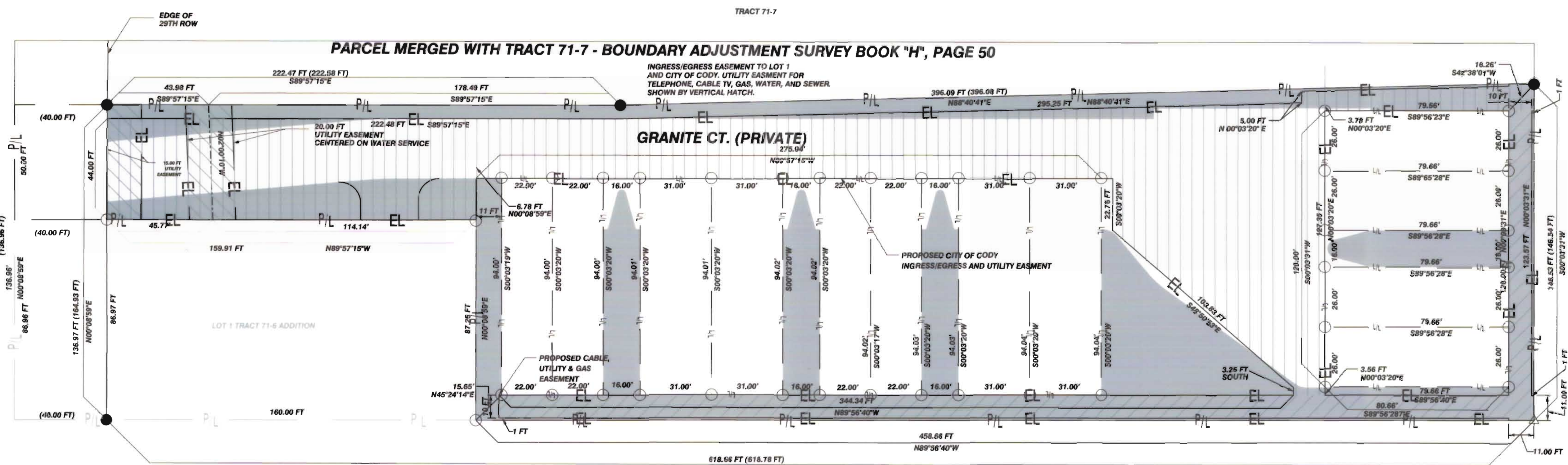


CENTER OF 29TH STREET (EXISTING PUBLIC)



- LEGEND
SUBDIVISION BOUNDARY
SUBDIVISION LOT LINES
EASEMENT LINE
EXISTING LOT BOUNDARY
SET ALUMINUM CAP
FOUND ALUMINUM CAP
FOUND AND REPLACED REBAR WITH ALUMINIUM CAP
DENOTES RECORD DISTANCE
COMMON AREA
AREA OF EASEMENT

CERTIFICATE OF DEDICATION

STATE OF WYOMING )
COUNTY OF PARK ) SS
KNOW ALL PERSONS BY THESE PRESENTS: THAT ROSENCRANSE CONSTRUCTION IS THE OWNER OF A PARCEL OF LAND IN TRACT 71-B, ACCORDING TO THE PLAT RECORDED IN BOOK "E" OF PLATS, PAGE 59, ACCORDING TO THE RECORDS OF THE COUNTY CLERK AND RECORDER OF PARK COUNTY, STATE OF WYOMING, BEING MORE PARTICULARLY DESCRIBED AS FOLLOWS:
BEGINNING AT THE SOUTHEAST CORNER OF TRACT 71-6; THENCE N 89°56'40" W FOR A DISTANCE OF 458.66 FEET TO A POINT; THENCE N 00°08'59" E FOR A DISTANCE OF 87.26 FEET TO A POINT; THENCE N 89°57'15" W FOR A DISTANCE OF 159.91 FEET TO A POINT ON THE EAST RIGHT OF WAY LINE OF 29TH STREET; THENCE N 89°57'15" W FOR A DISTANCE OF 40.00 FT TO THE CENTERLINE OF 29TH STREET; THENCE N 00°08'59" E ALONG THE CENTERLINE OF 29TH STREET FOR A DISTANCE OF 50 FT; THENCE S 89°57'15" E FOR A DISTANCE OF 40.00 FT TO A POINT ON THE EAST RIGHT OF WAY LINE OF 29TH STREET; THENCE S 89°57'15" E FOR A DISTANCE OF 222.47 FEET TO A POINT; THENCE N 88°40'41" E FOR A DISTANCE OF 396.09 FEET TO A POINT; THENCE S 00°03'31" W FOR A DISTANCE OF 146.53 FEET TO THE POINT OF BEGINNING; SAID TRACT CONTAINING 1.72 ACRES±.



APPROVALS

CITY PLANNING AND ZONING BOARD:
RECOMMENDED FOR APPROVAL THIS 22nd DAY OF OCTOBER, 2007 BY THE CITY PLANNING AND ZONING BOARD OF CODY, WYOMING.

BY CHAIRMAN: GLENN W. NIELSON

CITY COUNCIL:
APPROVED THIS 6th DAY OF NOVEMBER, 2007 BY THE CITY COUNCIL OF CODY, WYOMING.

BY MAYOR: G. ROGER SEDAM

ATTESTED BY CITY CLERK: JENNIFER ROSENCRANSE

STATE OF WYOMING )
COUNTY OF PARK )

THE FOREGOING CERTIFICATE WAS ACKNOWLEDGED BEFORE ME BY G. ROGER SEDAM, MAYOR AND JENNIFER ROSENCRANSE, CITY CLERK ON THIS 6th DAY OF November, 2007.

WITNESS MY HAND AND OFFICIAL SEAL.

Notary Public: Ulra B. Baul

MY COMMISSION EXPIRES: July 9, 2008



CERTIFICATE OF SURVEYOR

STATE OF WYOMING )
COUNTY OF PARK ) SS

I, PAUL R. CAMPBELL, A PROFESSIONAL LAND SURVEYOR REGISTERED IN THE STATE OF WYOMING BY REGISTRATION NUMBER 2571 HEREBY CERTIFY:

THAT FROM MAY 2005 TO AUGUST 2006, THE "BOULDER RIDGE PUD", SHOWN HEREON WAS SURVEYED UNDER MY DIRECTION; THAT THE LAND SURVEYED IS CORRECTLY DESCRIBED IN THE CERTIFICATE OF DEDICATION, AND THIS PLAT ACCURATELY SHOWS THE CORRECT LOCATION AND DIMENSIONS OF SAID ADDITION; THAT THE REQUIREMENTS OF W.S. 36-11-101 THROUGH 36-11-110 WERE COMPLIED WITH AND MONUMENTS AND LOT CORNERS SHOWN AND DESCRIBED HEREON WERE ACTUALLY SET; THAT ALL ELEMENTS OF THE SURVEY CLOSE TO AN ACCURACY OF BETTER THAN ONE PART IN FIVE THOUSAND AND DIMENSIONS ARE GIVEN IN FEET AND DECIMALS OF A FOOT; THAT THE BEARING BASE FOR THIS SURVEY IS S89°56'40"E ALONG THE SOUTH LINE OF TRACT 71-6.

IN WITNESS WHEREOF I HAVE SET MY HAND AND SEAL THIS 12th DAY OF SEPTEMBER, 2007.

Professional Land Surveyor seal for Paul R. Campbell, No. 2571.

CAMPBELL & ASSOCIATES, INC. BY: PAUL R. CAMPBELL WYOMING REGISTRATION NO. 2571 L.S.

- NOTES:
1. COMMON AREA = ±0.54 ACRES
2. TOTAL AREA = ±1.72 ACRES
3. PERCENTAGE OF COMMON AREA = ±31% MINIMUM REQUIRED = 20%
4. ALLEY REQUIREMENTS ARE REQUESTED TO BE WAIVED.
5. SANITARY SEWER SYSTEM IS TO BE PRIVATELY MAINTAINED.

COUNTY CLERK'S CERTIFICATE

THIS PLAT WAS FILED FOR THE PUBLIC RECORD IN THE OFFICE OF THE CLERK, PARK COUNTY, WYOMING, AT 12:30 O'CLOCK P.M. ON THE 9th DAY OF January, 2007, AND IS DULY RECORDED IN BOOK J, PAGE NUMBER 72.

Kelly Jensen, Park County Clerk

Deputy

Cory Rosencranse, Manager - Rosencranse Construction, L.L.C.

THE FOREGOING CERTIFICATE WAS ACKNOWLEDGED BEFORE ME BY CORY ROSENCRANSE ON THIS 4th DAY OF January, 2007. WITNESS MY HAND AND OFFICIAL SEAL.

Notary Public seal for Pamela J. Freese, No. 1009.

MY COMMISSION EXPIRES: July 10, 2009

ENGINEER James G. Evans, P.E. Sage CIVIL ENGINEERING 2824 BIGHORN AVE. CODY, WY 82414

FINAL PLAT BOULDER RIDGE P.U.D. DEVELOPER ROSENCRANSE CONSTRUCTION, L.L.C. 26 GLORIA LANE CODY, WY 82414

WITHIN TRACT 71-6 - Cody Heights Subdivision, Resurvey T.53N., R.101W. 6th P.M. City of Cody, Park County, Wyoming